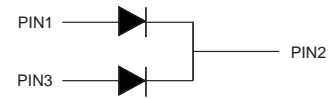
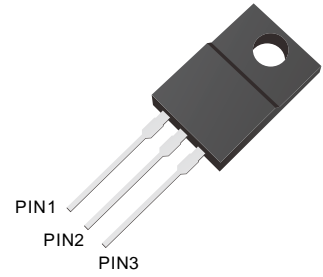


Schottky Barrier Rectifiers

Features

- High current capability
- Low forward voltage drop
- Low power loss, high efficiency
- High surge capability
- High temperature soldering guaranteed
- Lead free in comply with EU RoHS 2011/65/EU directives



Mechanical data

- Case: ITO-220AB
- Approx. Weight: 1.561g (0.055oz)
- Case Material: “Green” molding compound, UL flammability classification 94V-0, “Halogen-free”.
- Mounting position: any

Ordering Information

Part Number	Shipping	Packing Type
LTM1040FT THRU LTM10200FT	50PCS/Tube	Tube

Maximum Ratings and Electrical Characteristics

Ratings At 25°C Ambient Temperature Unless Otherwise Specified

Characteristics	Symbol	LTM1040FT	LTM1045FT	LTM1060FT	LTM10100FT	LTM10150FT	LTM10200FT	Unit
Maximum Recurrent Peak Reverse Voltage	V_{RRM}	40	45	60	100	150	200	V
Maximum RMS voltage	V_{RMS}	28	32	42	70	105	140	V
Maximum DC Blocking Voltage	V_{DC}	40	45	60	100	150	200	V
Maximum Average Forward Rectified Current Per leg Per device	$I_{F(AV)}$	5 10						A
Peak Forward Surge Current, 8.3ms Single Half Sine-wave Superimposed on Rated Load (JEDEC method)(Per leg)	I_{FSM}	100						A
Max Instantaneous Forward Voltage at 10 A(Per leg)	V_F	0.7		0.75	0.85	0.9	0.92	V
Maximum DC Reverse Current $T_J = 25^\circ\text{C}$ at Rated DC Reverse Voltage $T_J = 125^\circ\text{C}$	I_R	0.1 20			0.05 20			mA
Typical Thermal Resistance	$R_{\theta JA}$ $R_{\theta JC}$	45 8						$^\circ\text{C}/\text{W}$
Typical Junction Capacitance (f=1MHz, $V_R=4\text{V}$)	C_J	300			200			pF
Operating Junction Temperature Range	T_J	-55 ~ +150				-55 ~ +175		$^\circ\text{C}$
Storage Temperature Range	T_{STG}	-55 ~ +150				-55 ~ +175		$^\circ\text{C}$



Characteristics Curves

Fig.1 Typical Forward Current Derating Curve

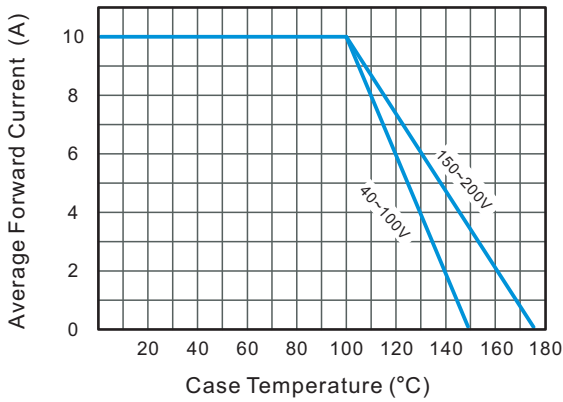


Fig.2 Typical Reverse Characteristics

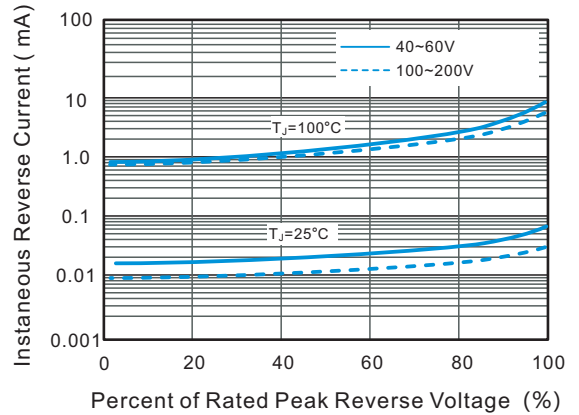


Fig.3 Typical Forward Characteristic(per leg)

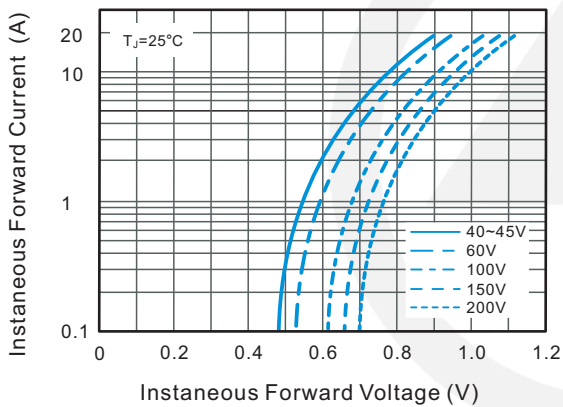


Fig.4 Typical Junction Capacitance

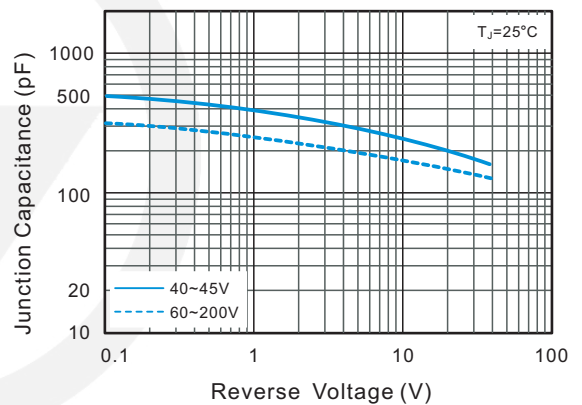


Fig.5 Maximum Non-Repetitive Peak Forward Surge Current

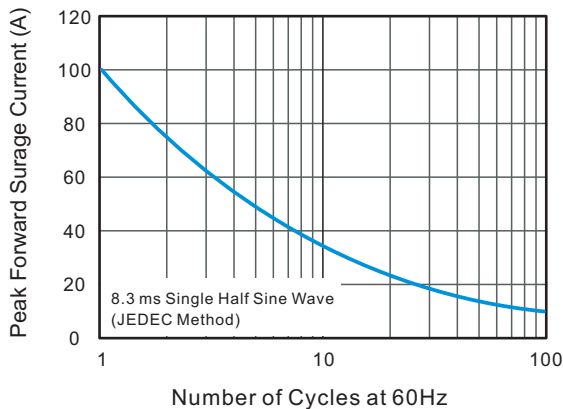
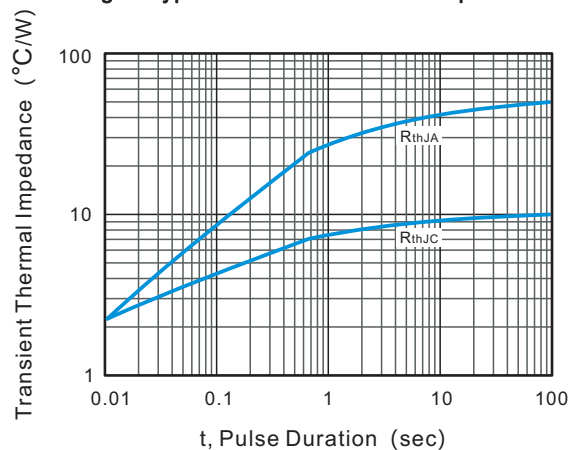
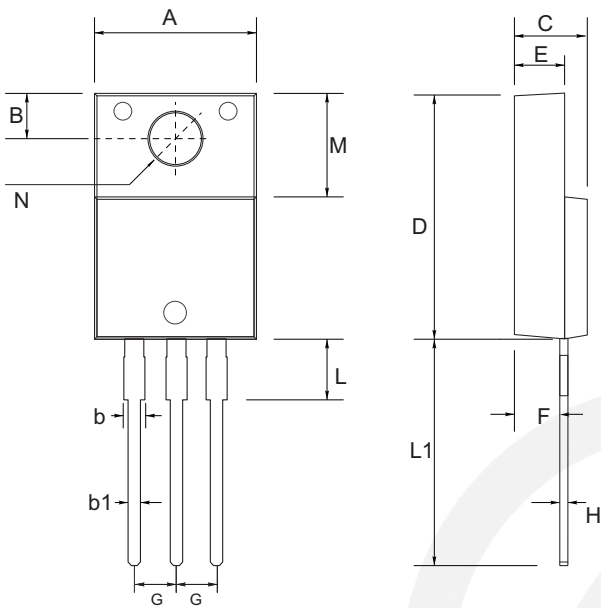


Fig.6- Typical Transient Thermal Impedance



ITO-220AB Package Outline



Symbol	Dimensions In Millimeters	
	Min.	Max.
A	9.85	10.50
B	2.54	2.85
b	1.10	1.40
b1	0.50	0.80
C	4.40	4.70
D	14.70	16.00
E	2.50	2.90
F	2.50	3.60
G	2.54 TYP.	
H	0.41	0.70
L	2.30	2.90
L1	13.00	14.30
M	6.30	7.00
N	3.4 TYP.	

Marking

Type number	Marking code
LTM1040FT	MBR1040FT
LTM1045FT	MBR1060FT
LTM1060FT	MBR1060FT
LTM10100FT	MBR10100FT
LTM10150FT	MBR10150FT
LTM10200FT	MBR10200FT

Important Notice and Disclaimer

Leading-Tech reverses the right to make changes to this document and its products and specifications at any time without notice.

Customers should obtain and confirm the latest product information and specifications before final design, purchase or use.

Leading-Tech makes no warranty, representation or guarantee regarding the suitability of its products for any particular purpose, not does Leading-Tech assume any liability for application assistance or customer product design.

Leading-tech does not warrant or accept any liability with products which are purchase or used for any unintended or unauthorized application.

No license is granted by implication or otherwise under any intellectual property rights of Leading-Tech.

Leading-Tech products are not authorized for use as critical components in life support devices or systems without express written approval of Leading-tech.

Version Update Information

Series NO.	Enactment/Revision Date	Effective Date	Version	Revision content	Revision Reason	Revision Person	Note
01	2024.4.13	2024.4.13	3.0	New File	/	Ding	