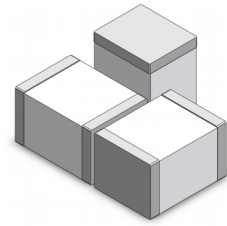


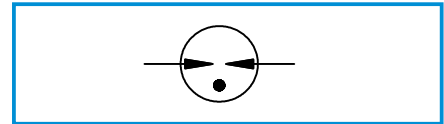
Gas Discharge Tube

Features

- Small Size Design EIA 1812 4.5×3.2×2.7mm
- Current Handling Capability 1,000A @ 8/20 μ s
- Low Capacitance and Insertion Loss
- Fast Response and Long Service Life
- Reliable to Protect Electrostatic Surge
- Moisture sensitivity level : Level 1



Functional Diagram



Applications

- RS485/232/422
- Internet



Electrical Parameter

DC Breakdown Voltage 1)2)	100V/s	210-390	V
Impulse Spark-over Voltage	At 1kV/μs	for 99 % of measured values	≤ 800
	At 1kV/μs	Typical values of distribution	≤ 700
Impulse Discharge Current 3)	8/20μs	1,000	A
Arc Voltage	At 1A	~8	V
Insulation Resistance	DC=100V	≥1	GΩ
Capacitance at 1 MHz	VDC=0.5V	≤1.0	pF
Weight		~0.20	g
Operating And Storage Temperature		-40-90	°C
Marking		Without	

1) At delivery AQL 0.65 level II GB/T 2828.1-2003

2) In ionized mode

3) Terms and waveforms in accordance with ITU-T Rec. K. 12; IEC 61643-21

Part Numbering System

LT 301 N

(1) (2) (3)

(1) Leading-ch Gas Discharge Tube

 (2) Series: DC Breakdown Voltage, e.g.: 151=15×10¹=150V

(3) Tolerance of DC Breakdown Voltage, M=+20%,

N=+30%, the Specific tolerance is decided by the table of

“Electrical Parameter”

Product Characteristics

Lead Material	Copper or iron nickel alloy
Body Material	Ceramics
Terminal Finish	100% Matte-Tin Plated

Environmental Reliability Characteristics

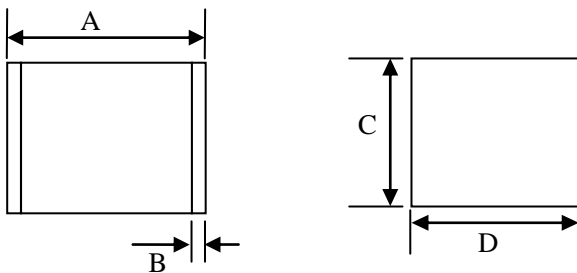
Testing items	Technical standards
High Temperature Storage Test	Temperature: 85°C Time: 2H
Low Temperature Storage Test	Temperature: -40°C Time: 2H
Vibration	Frequency: 10-500Hz Amplitude: 0.15mm Time: 45mins
Resistance of soldering heat	Temperature: 260±5°C Time of dip soldering: 10s, 1time

Note: Up-screen program can be specified by customer's request via contacting Bencent service

Solderability test

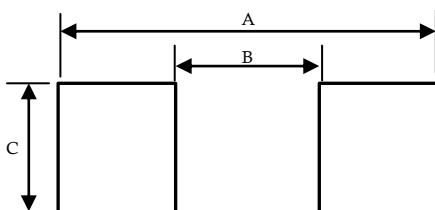
Solderability	Solder Pot Temperature:	245°C ± 5°C
	Solder Dwell Time:	4-6 seconds

Package Outline



REF	mm
A	4.5±0.3
B	0.5±0.2
C	2.7±0.2
D	3.2±0.2

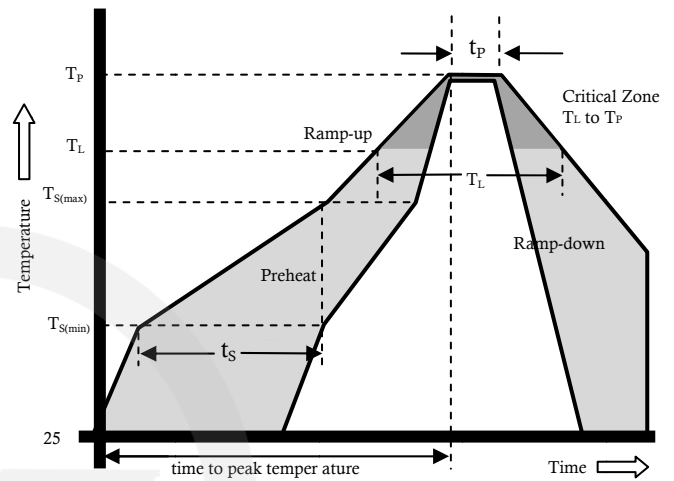
Suggested Pad Layout



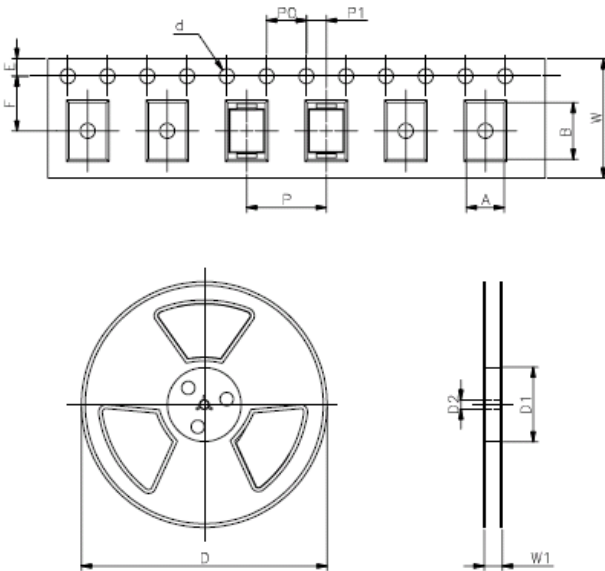
REF	mm
A	5.5
B	3.5
C	3.5

Reflow Profile

Reflow Condition		Pb-Free assembly
Pre Heat	Temperature Min	150°C
	Temperature Max	200°C
	Time (min to max)	60 – 180 secs
Average ramp up rate (Liquids) T _{amp} (T _L) to peak		3°C/second max
T _S (max) to T _L - Ramp-up Rate		3°C/second max
Reflow	- Temperature (T _L) (Liquids)	217°C
	- Temperature (T _L)	60 – 150 seconds
Peak Temperature (T _p)		260±0/-5 °C
Time within 5°C of actual peak Temperature (t _p)		8 – 20 seconds
Ramp-down Rate		6°C/second max
Time 25°C to peak Temperature (T _p)		8 minutes Max.
Do not exceed		260°C



Package Reel Information



REF	mm	inch
A	3.7±0.2	0.146±0.008
B	5.0±0.1	0.197±0.004
d	Φ 1.5±0.1	Φ 0.059±0.004
E	1.75±0.1	0.069±0.004
F	5.5±0.1	0.217±0.002
P	8.0±0.1	0.315±0.004
P0	4.0±0.1	0.157±0.004
P1	2.0±0.1	0.079±0.004
W	12.0±0.2	0.472±0.008
D	Φ330.0	Φ13.0
D1	Φ50Min	Φ1.97Min
D2	Φ13±0.5	0.512±0.02
W1	16.8±2.0	0.661±0.079

OUTLINE	REEL (PCS)	PER CARTON (PCS)	REEL DIAMETERS (mm)	CARTON SIZE(mm)		
				L	W	H
TAPING	2,500	40,000	330	360	360	380