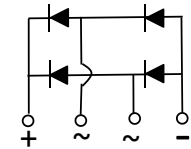


## 35A Glass Passivated Single-Phase Bridge Rectifier

### Features

- Glass passivated chip
- Low Reverse Leakage Current
- High surge current capability
- Case to Terminal Isolation Voltage 2500V
- Lead free in comply with EU RoHS 2011/65/EU directives



### Mechanical Data

- Case: 6GBJ
- Marking/Polarity: Marked on Body

### Ordering Information

Part Number	Shipping	Packing Type
LB3504 THRU LB3516	250PCS/Box	Tube

### Maximum Ratings and Thermal Characteristics

@Ta=25°C unless otherwise noted

Parameter	Symbol	LB3504	LB3506	LB3508	LB3510	LB3512	LB3514	LB3516	Unit
Maximum Repetitive Peak Reverse Voltage	$V_{RRM}$	400	600	800	1000	1200	1400	1600	V
Average Forward Output Rectified Current @Ta=120°C	$I_{F(AV)}$	35							A
Forward Voltage Per Leg @ $I_{FM}=17.5A$	$V_F$	1.1							V
Peak Forward Surge Current 8.3ms Single Half Sine-wave Superimposed on Rated Load	$I_{FSM}$	480							A
Maximum DC Reverse Current at Rated DC Blocking Voltage Per Leg	$I_R$	5 500							$\mu A$
Rating For Fusing (t < 8.3ms)	$i^2t$	956							A <sup>2</sup> S
Rms Isolation Voltage From Case To Leads	$V_{isol}$	2500							V
Typical Junction Capacitance	$C_J$	150							pF
Maximum Thermal Resistance Per Leg	$R_{\theta JC}$	0.72							°C/W
Operating Junction And Storage Temperature Range	$T_J, T_{STG}$	-55 ~ +150							°C

Note:

- (1) Junction to case with heatsink
- (2) Recommended mounting position is to bolt down on heatsink with silicone thermal compound for maximum heat transfer with M3 screw.



### Characteristics Curves

Fig.1 Forward Current Derating Curve

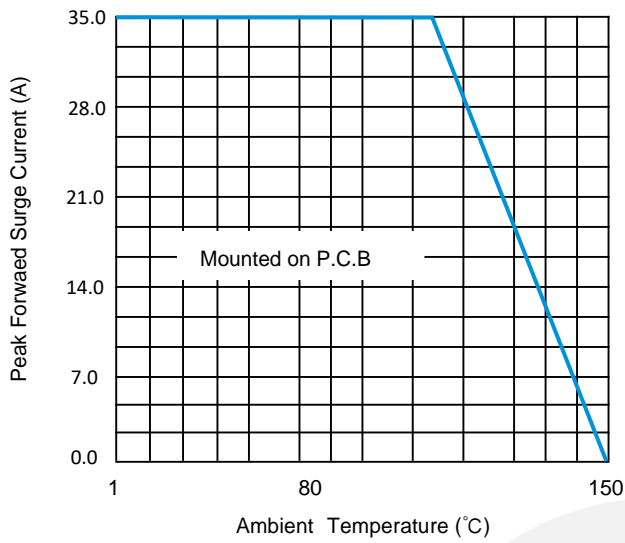


Fig.2 Maximum Non-Repetitive Surge Current

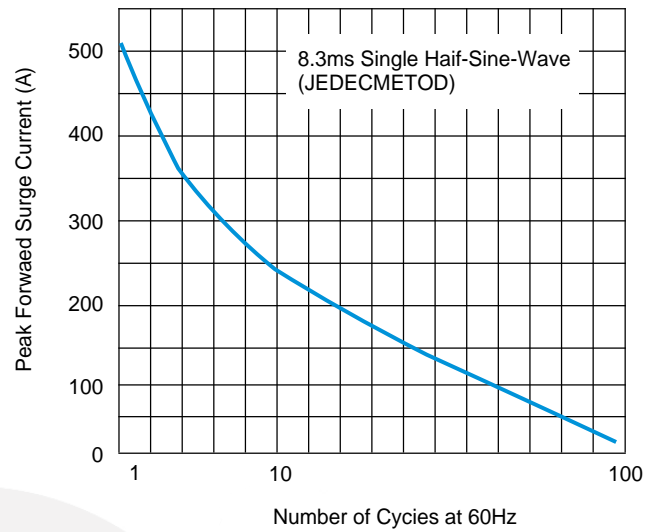


Fig.3 Typical Reverse Characteristics

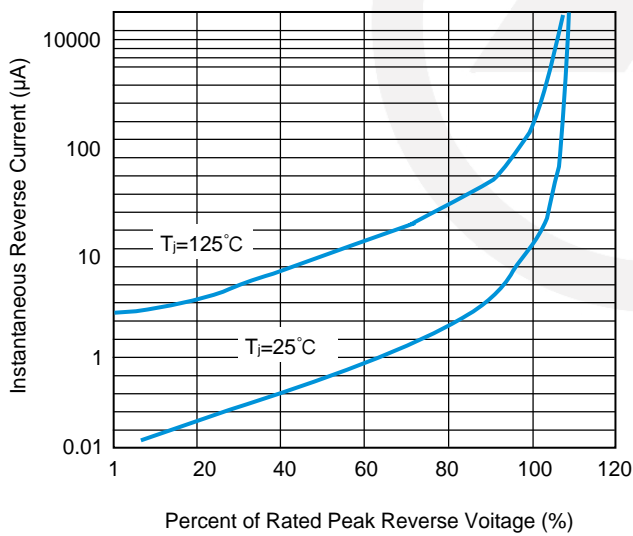
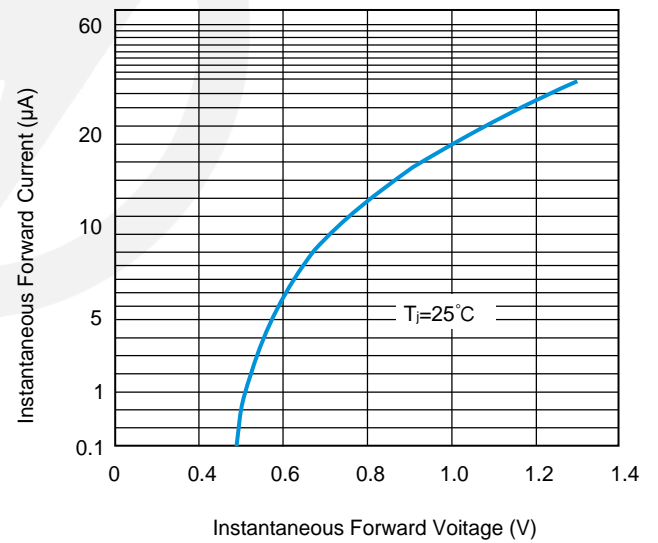


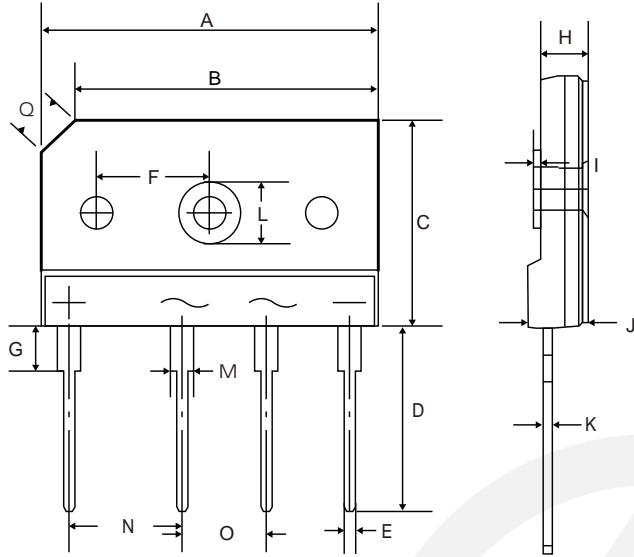
Fig. Typical Forward Characteristics





## 6GBJ Package Outline

Unit: mm



SYMBOL	DIMENSIONS	
	MIN	MAX
A	29.70	30.30
B	26.80	27.20
C	19.70	20.30
D	17.40	17.80
E	0.98	1.02
F	9.80	10.2
G	3.80	4.30
H	3.46	3.85
I	0.40	0.50
J	4.45	4.85
K	0.58	0.62
L	5.70	6.30
M	1.90	2.30
N	9.80	10.20
O	7.20	7.70
Q	4.00	4.46

## Important Notice and Disclaimer

Leading-Tech reserves the right to make changes to this document and its products and specifications at any time without notice.

Customers should obtain and confirm the latest product information and specifications before final design, purchase or use.

Leading-Tech makes no warranty, representation or guarantee regarding the suitability of its products for any particular purpose, not does Leading-Tech assume any liability for application assistance or customer product design.

Leading-tech does not warrant or accept any liability with products which are purchase or used for any unintended or unauthorized application.

No license is granted by implication or otherwise under any intellectual property rights of Leading-Tech.

Leading-Tech products are not authorized for use as critical components in life support devices or systems without express written approval of Leading-tech.

## Version Update Information

Series NO.	Enactment/Revision Date	Effective Date	Version	Revision content	Revision Reason	Revision Person	Note
01	2024.9.12	2024.9.12	3.0	New File	/	Ding	